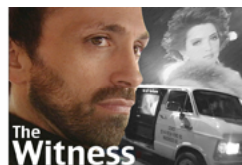


**FOR IMMEDIATE RELEASE: Media Advisory**



**Link TV Contact:** Jennifer Spoorri 415-248-3950 x122, [jspoorri@linktv.org](mailto:jspoorri@linktv.org)

**Tribe of Heart Contact:** James LaVeck, 607-275-0806, [james@tribeofheart.org](mailto:james@tribeofheart.org)

---

## **NATIONAL BROADCAST OF AWARD-WINNING DOCUMENTARY ON LINK TV**

***The Witness* Highlights the Dramatic and Inspiring Personal Transformation of Tough Brooklyn Construction Contractor Whose Heart is Opened by the Love of a Kitten**

**Link TV Makes Pro-Animal Film Available to Viewers in 26 Million American Homes  
Airs Saturday, Feb. 25 at 7 PM PST /10 PM EST (DIRECTV Ch. 375/DISH Network Ch. 9410)**

*Encore Broadcasts: Sunday, Feb. 26th at 1 AM, 7 AM & 1 PM PST / 4 AM, 10 AM & 4 PM EST,  
Thurs., Mar. 2nd at 4 PM & 10 PM PST / 7 PM & 1 AM EST, and Fri. Mar. 3rd at 4 AM PST / 7 AM EST*

**San Francisco, CA**—Feb. 15, 2006—Link TV today announced the upcoming broadcast of the award-winning documentary *The Witness*, produced by James LaVeck and directed by Jenny Stein of Tribe of Heart. *The Witness*, which airs Saturday, Feb. 25 at 7 PM PST, 10 PM EST, during Link TV's pledge drive, tells the inspiring story of tough construction contractor turned animal rescuer Eddie Lama. A film festival favorite, *The Witness* has won seven Best Documentary awards and one Best of Festival award. *Los Angeles Times* columnist Howard Rosenberg wrote, "*The Witness* is one man's truth that cries out for mass exposure... may be the most important and persuasive film about animals ever made."

Actor William Baldwin, who calls *The Witness* "one of the most moving documentaries I've ever seen," urges viewers to "watch this important, life-changing film." Baldwin and his wife, singer-songwriter Chynna Phillips of the musical group Wilson-Phillips, were so impressed with *The Witness* that they hosted screenings at their home for their friends and colleagues.

"Eddie Lama, who learned about violence through his own rites of passage on the mean streets of Brooklyn, now speaks with eloquence, passion and humility about the pressing need to protect the vulnerable," said Baldwin. "That a man with his life experience could be so completely transformed by spending time with a kitten is a testimony both to the magic of the human-animal relationship and the magic of the human spirit."

"So many people who have seen *The Witness* at film festivals and independent theatres have asked us, 'why isn't this playing on national TV?'" said the film's producer James LaVeck. "We always tell them there are a lot of great films they're not getting to see that tell the truth about what goes on behind closed doors in this country. That's why now, this opportunity to reach a mass audience in partnership with a broadcaster with the integrity and independence of Link TV, means so much."

"We bring documentary films to the American viewer that extend far beyond the narrow scope of the popular media," said Link TV Producer Toni Whiteman. "*The Witness* is one of those films, made with the courage and commitment to speak on behalf of those who have no voice. The strength of the force to banish this provocative film is the very reason we chose to broadcast it."

**Six Encore Broadcasts:** Sunday, Feb. 26th at 1 AM, 7 AM & 1 PM PST / 4 AM, 10 AM & 4 PM EST, Thursday, March 2nd at 4 & 10 PM PST / 7 PM & 1 AM EST, Friday, March 3rd at 4 AM PST / 7 AM EST.

**About Tribe of Heart:** Producer James LaVeck and Director Jenny Stein founded their Ithaca, New York-based non-profit production company, Tribe of Heart, to fill an unmet need for films that explore the human potential to respond to injustice with creativity and non-violence.

**About Link TV:** Link TV is a non-commercial, independent television network available in more than 26 million U.S. homes on DIRECTV channel 375 and DISH Network channel 9410. The 24-hour programming is a mix of documentaries, international news, foreign films and the best of World Music. Link TV is operated by Link Media, Inc., a California non-profit organization, with production studios in San Francisco, New York and Washington.